

# PUBLIC PARTICIPATION PLAN

We Invite You to Join Us in Shaping  
the Future of Mobility for the  
Columbus-Phenix City Metro Region.

2019-2022

COLUMBUS-PHENIX CITY METROPOLITAN PLANNING ORGANIZATION

420 10th Street Columbus, GA 31901

**RESOLUTION  
COLUMBUS-PHENIX CITY TRANSPORTATION STUDY POLICY COMMITTEE**

**2019-2022 PUBLIC PARTICIPATION PLAN (PPP)**

**WHEREAS** the Columbus-Phenix City Metropolitan Planning Organization (MPO) has been designated by the Governors of the States of Alabama and Georgia as the recipient of Columbus-Phenix City Urbanized Area (UZA) and Metropolitan Planning Area (MPA) funds, and who is responsible, together with the States of Alabama and Georgia, for implementing the applicable provisions of 23 USC 134 and 135 (amended by the FAST Act, Sections 1201 and 1202, December 2015); 42 USC 2000d-1, 7401; 23 CFR 450 and 500; 40 CFR Parts 51, and 93; and

**WHEREAS** the U.S. Department of Transportation requires all urbanized areas, as established by the U.S. Bureau of the Census, doing area-wide urban transportation planning, to submit a Public Participation Plan (PPP) as a condition for meeting the provisions by Title 23 USC 134; and

**WHEREAS** the PPP is consistent with the goals, and objectives of the MPO, and reflects changes in program emphasis and funding availability outlined in 23 USC 134 and 23 CFR 450.316; and

**WHEREAS** the MPO developed the PPP in consultation with interested parties outlined in 23 CFR 450.316 including individuals, affected public agencies, representatives of public transportation employees, representatives of users of public transportation, representatives of users of pedestrian walkways and bicycle transportation facilities, representatives of the disabled; and

**WHEREAS** the MPO provided a 45-day comment period from June 19, 2018 to August 3, 2018; and

**WHEREAS** the Columbus Department of Planning, the Georgia Department of Transportation, and the Alabama Department of Transportation have reviewed the activities of the planning process and found them to be in conformance with the requirements of the laws and regulations; now

**THEREFORE, BE IT RESOLVED** that the Columbus-Phenix City Transportation Study (C-PCTS) Policy Committee endorses the 2019-2022 PPP; and

**BE IT FURTHER RESOLVED** that the C-PCTS Policy Committee finds that the requirements of Title 23 USC 134 and 23 CFR 450 regarding metropolitan transportation planning have been met and authorizes its chairman to execute a joint certification of this fact with the Georgia Department of Transportation, the Alabama Department of Transportation, the Federal Transit Administration, and the Federal Highway Administration.



Mayor Teresa Tomlinson, Chairman  
Policy Committee



Rick Jones, MPO/Planning Director  
Attest

Date 8-21-2018

**AMENDMENT**

**COLUMBUS-PHENIX CITY TRANSPORTATION STUDY  
POLICY COMMITTEE**

**A RESOLUTION TO AMEND THE 2019-2022 PUBLIC PARTICIPATION PLAN (PPP)**

**WHEREAS** the Governors of Georgia and Alabama have designated the Columbus Department of Planning as the Metropolitan Planning Organization (MPO) for the Columbus-Phenix City (C-PCTS) urban area; and

**WHEREAS** it is necessary to amend the 2019-2022 Public Participation Plan (PPP) to include the following changes:

- Addition of conference calling and virtual public/committee meetings.
- Public Comment period for amending required documents.

**BE IT RESOLVED** that the Columbus-Phenix City Transportation Study Policy Committee approves the amendment of the 2019-2022 Public Participation Plan (PPP) to reflect these changes.

  
\_\_\_\_\_  
Mayor B.H. "Skip" Henderson, III, Chairman  
Columbus-Phenix City Transportation Study  
Policy Committee

\_\_\_\_\_  
June 16, 2020  
Date

Attest:   
Lynda Temples, Principal Transportation Planner

COLUMBUS-PHENIX CITY  
METROPOLITAN PLANNING ORGANIZATION (MPO)

PUBLIC PARTICIPATION PLAN 2019-2022

View this document at <http://www.columbusga.org/Planning>

For Information regarding this document, please contact  
Carolina Rodriguez, Transportation Planner  
Columbus-Phenix City Transportation Study  
420 10th Street, 2nd Floor  
P.O. Box 1340  
Columbus, Georgia 31902  
Telephone: 706-225-3938  
FAX: 706-653-4534  
Email: [cpcmpo@columbusga.org](mailto:cpcmpo@columbusga.org)

Adopted August 21, 2018

The Public Participation Plan was prepared as a cooperative effort of the U.S. Department of Transportation, Federal Highway Administration, Federal Transit Administration, the Alabama Department of Transportation, the Georgia Department of Transportation, and local participating governments, in partial fulfillment of requirements in Title 23 USC 134 and 135, amended by the FAST Act, Sections 1201 and 1202, December 2015. The contents of this document do not necessarily reflect the official views or policy of the U.S. Department of Transportation.

The Columbus-Phenix City MPO complies with Title VI of the Civil Rights Act of 1964 (42 U.S.C. 2000d et seq.), which states that “no person in the United States shall, on the ground of race, color, or national origin, be excluded from participation in, be denied the benefits of, or be subjected to discrimination under any program or activity receiving Federal financial assistance.” In addition to Title VI, there are other Nondiscrimination statutes that afford legal protection. These statutes include the following: Section 162 (a) of the Federal-Aid Highway Act of 1973 (23 USC 324) (sex), Age Discrimination Act of 1975 (age), and Section 504 of the Rehabilitation Act of 1973/Americans with Disabilities Act of 1990 (disability).

## Contents

What is the Columbus-Phenix City MPO? .....	7
What does the MPO do? .....	7
Did You Know...? .....	8
Transportation Planning Process.....	9
CPCMPO Planning Activities .....	10
Committee Structure.....	12
<b>PUBLIC INVOLVEMENT PLAN.....</b>	<b>13</b>
Why Should You Be Involved?.....	13
How do Transportation Decisions Affect People and Communities?.....	13
Civil Rights Policy Framework.....	14
Spectrum of Public Participation .....	15
Performance Measures .....	16
.....	16
<b>PUBLIC PARTICIPATION TOOLS .....</b>	<b>17</b>
Calendar of Prioritized Community Events .....	17
Community Characteristics Interactive Map.....	18
Additional Location-based Tools.....	18
Center for Neighborhood Technology (CNT) .....	18
Response Outreach Area Mapper (ROAM).....	18
Experiential Techniques .....	19
Partnering with Community-Based Organizations.....	19
<b>HOW ARE WE DOING?.....</b>	<b>20</b>
After Action Report.....	20
Public Involvement Evaluation Report (PIER) .....	21
<b>LEARN MORE.....</b>	<b>22</b>

Online and Social Media ..... 22

Publications..... 22

DEVELOPMENT OF THIS PLAN ..... 23

Interested Parties ..... 23

Public Review Process..... 23

Public Comments..... 24

Committee Comments ..... 25

# ABOUT THE MPO

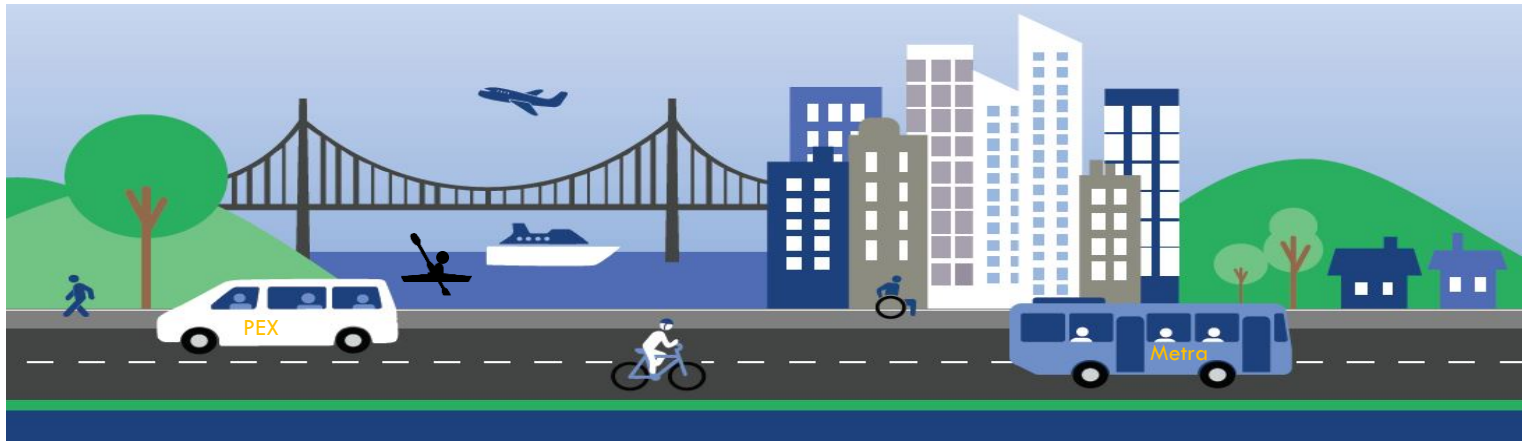
## What is the Columbus-Phenix City MPO?

The Columbus-Phenix City Metropolitan Planning Organization (MPO) is your region's public decision-making policy board for prioritizing spending of federal, state, and local multimodal transportation dollars. MPOs make transportation investment decisions for the metro area using a cooperative, continuous, and comprehensive approach. CPCMPO is hosted by the Columbus Consolidated Government's Planning Department.

## What does the MPO do?

The core functions of the MPO are to—

- 1) Establish and manage a fair and impartial setting for effective regional decision making.
- 2) Use data and planning methods to identify and evaluate transportation improvement options.
- 3) Develop long- and short- range plans, programs, and studies to address the region's multimodal needs.
- 4) Involve the public in all stages of transportation planning and programming.

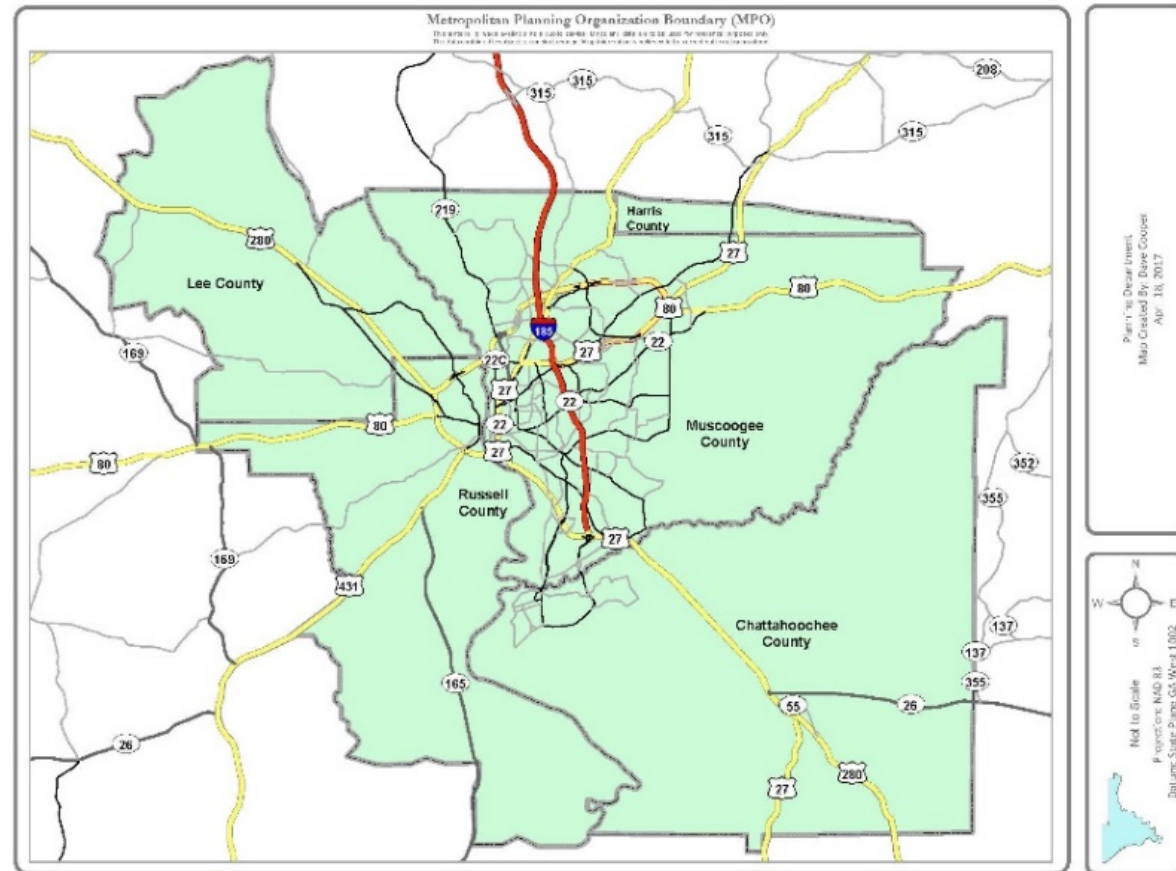


<sup>1</sup> Image from the US Department of Transportation 2016 *Every Place Counts Leadership Academy Transportation Toolkit*. Chattahoochee River kayaker, Metro, and PEX added by CPCMPO staff.

## Did You Know...?

The Columbus-Phenix City MPO, one of the first in the nation, was established in 1964<sup>2</sup>. The map<sup>3</sup> below shows the planning area and includes—

- ✓ 734 square miles
- ✓ 280,000+ people  
(about 380 persons/sq.mi.)
- ✓ 2 State  
Departments of  
Transportation
- ✓ 5 Counties
- ✓ 2 Cities
- ✓ 2 Transit Providers
- ✓ 1 airport
- ✓ 1 military  
installation
- ✓ 6 staff members



<sup>2</sup> For a complete listing of MPOs across the country, visit <https://www.planning.dot.gov/mpo.asp>.

<sup>3</sup> Per request received during public comment period, map was enlarged from the draft version.



## Transportation Planning Process

The transportation system includes everything from roadways, stormwater infrastructure, and transit to rail, air, bicycle, and pedestrian facilities. How the system performs influences many aspects of everyday life like employment, housing, air quality, social equity, safety, sense of place, and environmental conservation. As you can see from Figures 1 and 2, transportation planning connects investments to broader national and regional goals. MPOs are required to use a performance-based process to show how investments lead to desired community outcomes.

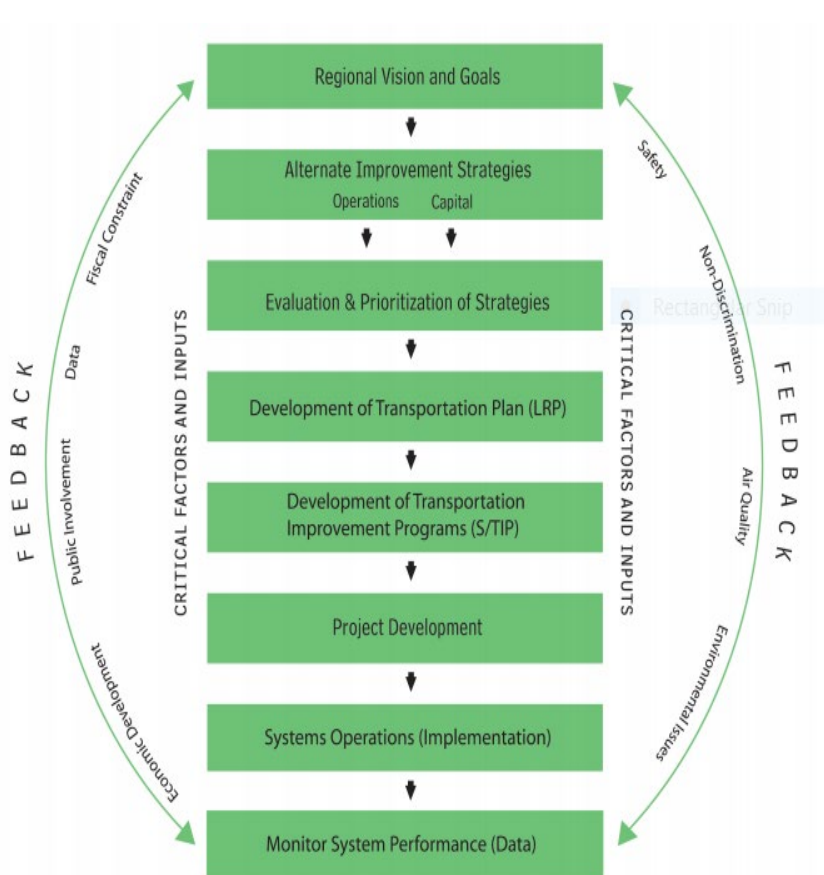


Figure 1. Transportation Planning Process. CPCMPO develops a long-range plan called the Metropolitan Transportation Plan (MTP).

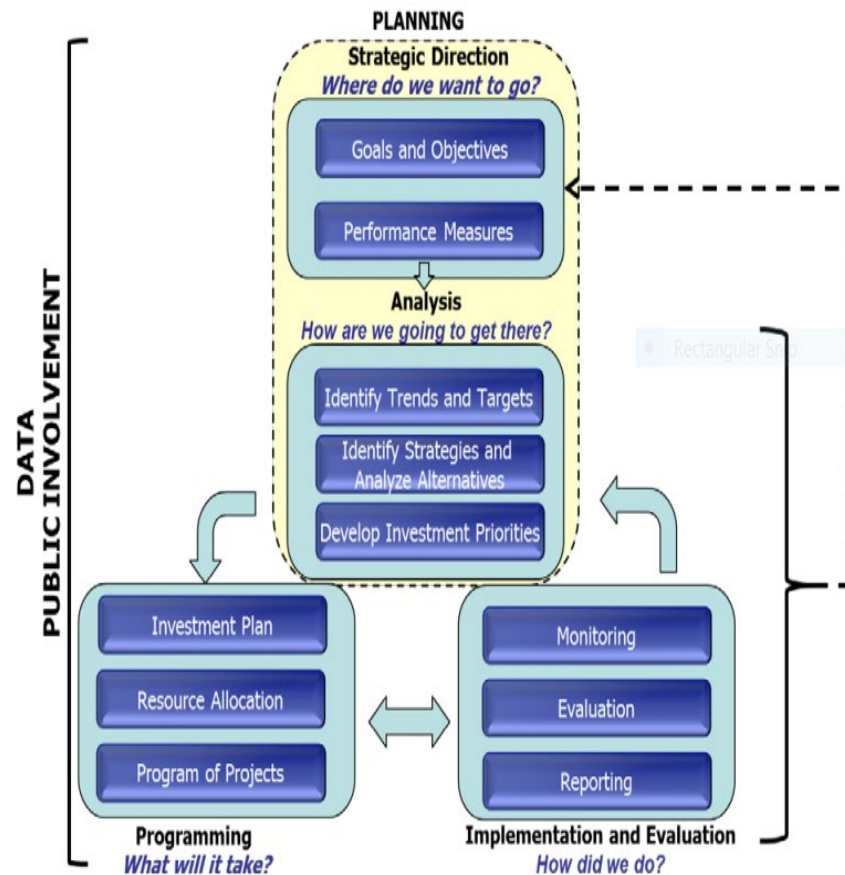


Figure 2. Framework for Performance-Based Planning and Programming. Performance measures indicate how all the transportation system meets agency and public goals and expectations.

## CPCMPO Planning Activities

The Columbus-Phenix City Metropolitan Planning Organization is responsible for updating and monitoring the following planning activities and products. Click on the title to view the latest version of the document.

Planning Activity	Description
<a href="#">Metropolitan Transportation Plan (MTP)</a>  Formerly called the Long Range Transportation Plan (LRTP)	Long range plan with a 20-year planning horizon. Uses performance measures and targets. Policies and actions lead to a regional and multimodal transportation network. Mobility and access for people and goods. Promotes the preservation and efficient performance of existing system; good quality of life. Fiscally constrained guide for project selection. Updated every 5 years and amended as needed. Requires a 15-day public comment period for new project amendments and/or amendments that increase project cost by 20% or more. Requires a 30-day public comment period.
<a href="#">Transportation Improvement Program (TIP)</a>	Based on the MTP. Short range program with a 4-year timeframe. Capital and non-capital surface transportation, bicycle and pedestrian facilities, and transit. Financial plan is detailed. Agency responsible for implementation is listed. Describes how projects will work towards achieving performance measures. Updated every 4 years and amended as needed. Requires a 15-day public comment period for new project amendments and/or amendments that increase project cost by 20% or more. Requires a 30-day public comment period.
<a href="#">Unified Planning Work Program (UPWP)</a>	Detailed list of urban transportation planning studies and tasks during the fiscal year. Guides staff work for the MPO. Identifies funding, personnel, and timeline for planning. Updated every fiscal year <sup>4</sup> . Requires a 15-day public comment period for new transportation studies or changes to the PL funding. Requires a 30-day public comment period.
<a href="#">Public Participation Plan (PPP)</a>	Action plan for engaging the public including traditionally underserved communities. All planning activities must be done in collaboration with the public. Evaluated yearly and updated as needed. Requires a 45-day public comment period for amendments. Requires a 45-day public comment period.
<a href="#">Congestion Management Plan (CMP)</a>	Required for Transportation Management Areas (TMA) with population > 200,000. Strategies for reducing congestion and increasing mobility.

<sup>4</sup> The fiscal year is 1 July to 30 June.

	Requires a 15-day comment period if new routes are added to the CMP. Requires a 30-day public comment period.
<u>Special Studies</u>	Used to study investment options. Studies can focus on corridors, a specific mode, or policy issue.

## Committee Structure

### Policy Committee

*Meets 3<sup>rd</sup> Tuesday. Reviews and approves all studies, plans, and programs. Ensures public involvement. Obtains optimum cooperation. Designates members to the technical and citizen committees.*

Mayor Teresa Tomlinson, Columbus, Chair	Steve Graben, Southeast Regional Engineer, Alabama DOT	Ed Phillips, Jr. PE, State Local Transportation Engineer, ALDOT (non-voting)
Mayor Eddie Lowe, Phenix City, Vice Chair	Rick Jones, Director of Planning, Columbus	Michael Presley, District Engineer, GDOT (non-voting)
Suzanne Burnette, Lee Russell COG, PEX	Peggy Martin, Chairman, Russell County Commission	Radney Simpson, Office of Planning, GDOT (non-voting)
Dennis Caliyó, Chairman, Citizens Advisory Committee	Russell McMurry, Commissioner, Georgia DOT	
Gerald Douglas, Chairman, Cusseta-Chatt. Commission	Lynn Westmoreland, Georgia State Transportation Board	
Bill English, Chairman, Lee County Commission	Rodney N. Barry, P.E. Division Administrator, FHWA, GA (non-voting)	
Rosa Evans, Director of METRA, Columbus	Mark D. Bartlett, Division Administrator, FHWA, AL (non-voting)	

### Technical Committee

*Meets Thursday of 2<sup>nd</sup> Full Week. Reviews studies, plans, and programs and makes recommendations to the policy committee. Maintains data inventories to inform planning process. Prepares an annual report on status of transportation.*

Rick Jones, Director of Planning, Columbus, Chair	Matt Leverette, Division Pre-Construction Engineer, Alabama DOT	Carol Comer, Multi-modal Planning Division, Georgia DOT (non-voting)
Jim Adcock, Master Planner, Fort Benning	Angel Moore, City Engineer, Phenix City	Andrew Edwards, Planning Team Leader, and FHWA, Georgia (non-voting)
Ramsey Ashmore, Montgomery Area Traffic Engineer, Alabama DOT	Adam Smith, Pre-Construction Engineer, GDOT	Michael Hora, PE, Asst. State Local Transportation Engineer, Planning, ALDOT (non-voting)
Tom Bickel, Board of Commissioners, Chattahoochee County	Jeremy Whittlesey, METRA, Columbus	Dennis Caliyó, Chairman, Citizens Advisory Committee (non-voting)
Shawn Blakeney, Russell County Engineer	Jacqueline R. Williams, Transportation Planning Specialist, Georgia DOT	Olivia Lewis, Federal Highway Administration, Georgia ((non-voting)
Patti Cullen, Executive Director, River Valley Regional Commission	Clint Andrews, Federal Highway Administration, Alabama (non-voting)	Harland Smith, District Planning & Programming Coordinator, GDOT (non-voting)
Vacant, Traffic Engineer, Columbus	Vance Beck, District Manager, SE Region Montgomery Area, ALDOT (non-voting)	Tim Toomy, Area Engineer, GDOT, (non-voting)
Felton Grant, Transportation Planning Coordinator, Columbus	Suzanne Burnette, Lee-Russell Council of Governments (non-voting)	
Justin Hardee, Lee County Engineer		
Pam Hodge, Deputy City Manager, Columbus		
Richard Howell, Director, Columbus Airport		
Wallace Hunter, City Manager, Phenix City		

### Citizens Advisory Committee

*Meets 3pm Tuesday of 2<sup>nd</sup> Full Week. Provides general advice concerning public views. Reviews and participates in work elements. Communicates with public.*

Dennis Caliyó, Columbus — Chair	Jim Pound, Columbus	Steven Dewitt, METRA (non-voting)
Jonnell Carol Minefee, Columbus — Vice Chair	Mike See — Columbus	Vincent Crosse, Chairman, Phenix City Chamber of Commerce (non-voting)
Oree Crittendon, Columbus	Alfred Stewart, Columbus	
Sally Bork Lassetter, Columbus	Rick Jones, Director of Planning, Secretary (non-voting)	
Daisy Lynton, Russell County, Alabama	Herbert Hill, Muscogee County School District (non-voting)	
Patrick McHenry, Columbus	Steve Vaughn, Civil Engineer Operations & Maintenance, Fort Benning (non-voting)	
Annie C. Mazyck, Columbus		

## PUBLIC INVOLVEMENT PLAN

### Why Should You Be Involved?

While state & local departments of transportation and transit agencies sponsor and implement projects, the MPO determines how funds are invested in your region. It was not always the case that the transportation system worked for everyone. Today's MPO leaders and stakeholders value the opportunity to engage with you on transportation issues that affect you and your community.

### How do Transportation Decisions Affect People and Communities?

MPOs are required to consider projects and strategies that—

- Support the *economic vitality* of the metropolitan area, especially by enabling global competitiveness, productivity, and efficiency.
- Increase the *safety* of the transportation system for motorized and non-motorized users.
- Increase the *security* of the transportation system for motorized and non-motorized users.
- Increase the *accessibility* and *mobility* of people and for freight.
- Protect and enhance the *environment*, promote *energy conservation*, improve the *quality of life*, and promote *consistency* between transportation improvements and State and local planned growth and economic development patterns.
- Enhance the *integration* and *connectivity* of the transportation system, across and between modes, for people and freight.
- Promote *efficient* system management and operation.
- Emphasize the preservation of the *existing transportation system*.
- Improve the *resiliency* and reliability of the transportation system and reduce or mitigate stormwater impacts of surface transportation.
- Enhance *travel* and *tourism*.

## Civil Rights Policy Framework

Through early and continuous public engagement, MPO decisions are accountable to the public. As an agency representing federal, state, and local interests, MPOs and participating agencies must uphold a variety of laws, statutes, and executive orders<sup>5</sup>.

	Americans with Disabilities Act (ADA)	Title VI Program <sup>6</sup>	Environmental Justice <sup>7</sup> (EJ)
How does it relate to transportation?	<ul style="list-style-type: none"> <li>Ensure pedestrians with disabilities have opportunity to use the transportation system in an accessible and safe manner.</li> </ul>	<ul style="list-style-type: none"> <li>FHWA Title VI Program is broader than the statute and encompasses race, color, national origin, sex, age, limited English proficiency, low-income, and disability.</li> </ul>	<ul style="list-style-type: none"> <li>Data collection and analysis; Assess adverse impacts on minority and/or low-income populations.</li> </ul>
Who must follow?	<ul style="list-style-type: none"> <li>State and local governments</li> <li>All public organizations</li> </ul>	<ul style="list-style-type: none"> <li>State and local governments that receive federal grants and aid.</li> <li>Governmental organizations.</li> </ul>	<ul style="list-style-type: none"> <li>Federal agencies</li> </ul>
What are agencies required to provide?	<ul style="list-style-type: none"> <li>Accessible buildings, buses, trains, sidewalks, and more.</li> <li>When agencies provide transportation options, they must be accessible for persons with disabilities.</li> </ul>	<ul style="list-style-type: none"> <li>Title VI Plan.</li> <li>Notice to the public.</li> <li>Translation/interpreters for people with limited English proficiency.</li> </ul>	<ul style="list-style-type: none"> <li>Meaningful public participation.</li> <li>Adopt USDOT EJ Principles.</li> </ul>
Where can you get involved?	<ul style="list-style-type: none"> <li>Public meetings for new projects.</li> <li>State or local disability councils</li> <li>File a complaint with a local, state, or federal agency if something is not accessible.</li> </ul>	<ul style="list-style-type: none"> <li>Public meetings when government organizations do transportation planning.</li> <li>Public meetings during the NEPA process.</li> <li>File a complaint with a local, state, or federal agency if you feel a project discriminates.</li> </ul>	<ul style="list-style-type: none"> <li>Public meetings for projects affecting your community.</li> </ul>

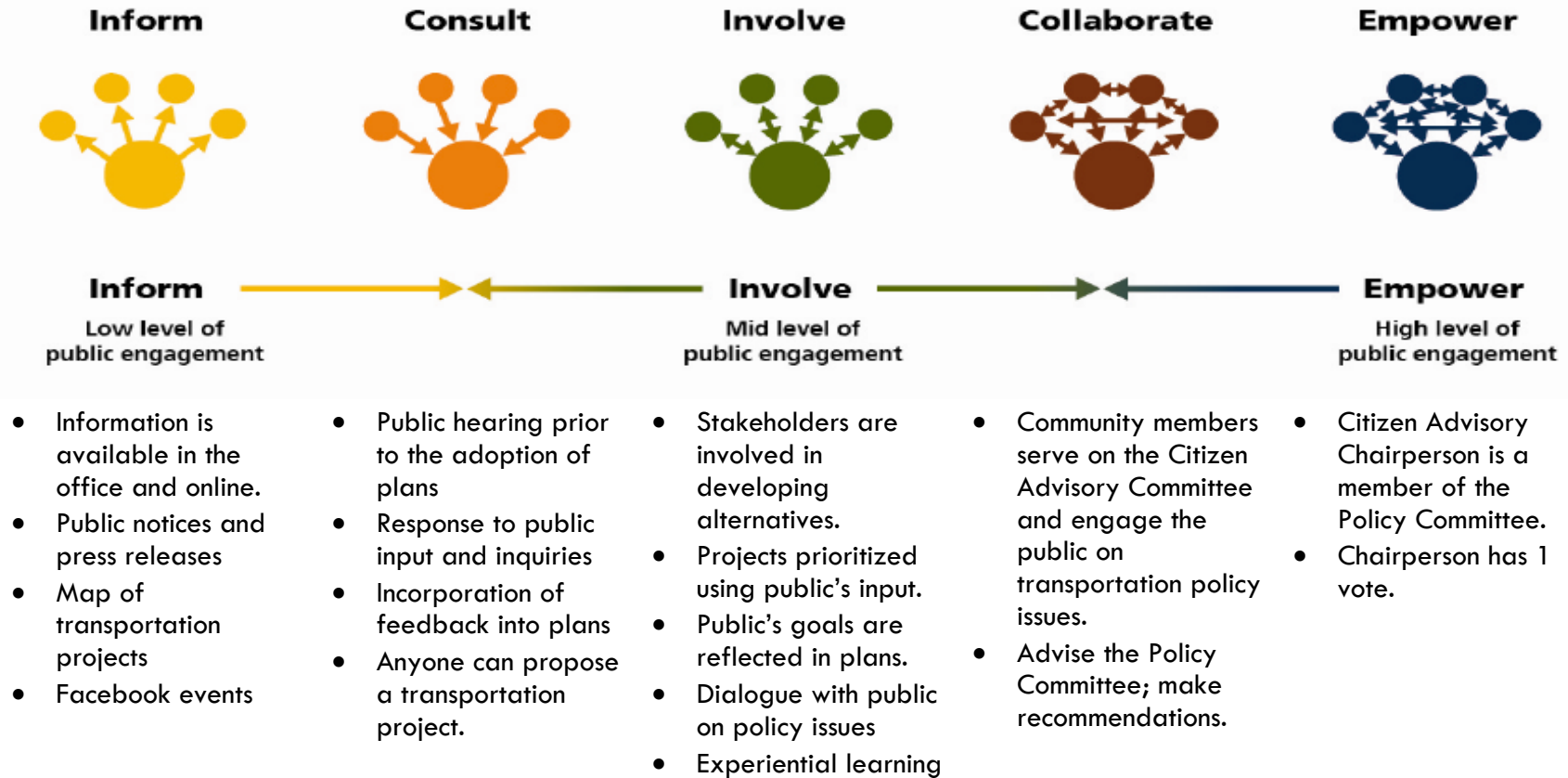
<sup>5</sup> FHWA and FTA provide additional resources via the Office of Civil Rights. This chart is adapted from 2017 Update of Transportation Briefing Book.

<sup>6</sup> To learn more about Title VI, visit <https://www.columbusga.gov/Planning/pdfs/TitleVI.pdf>.

<sup>7</sup> To learn more about Environmental Justice, visit [https://www.columbusga.gov/planning/enviro\\_justice.htm](https://www.columbusga.gov/planning/enviro_justice.htm).

## Spectrum of Public Participation

The International Association for Public Participation places efforts to engage the public along a spectrum<sup>8</sup> reflecting increasing impact on decision-making. CPCMPO decisions range from informal to formal and are made by high level authorities as well as MPO staff. We strive to obtain the right level of participation depending on the type of decision being made. Below are examples of how we engage the public along this continuum.



<sup>8</sup> [https://cdn.ymaws.com/www.iap2.org/resource/resmgr/foundations\\_course/IAP2\\_P2\\_Spectrum\\_FINAL.pdf](https://cdn.ymaws.com/www.iap2.org/resource/resmgr/foundations_course/IAP2_P2_Spectrum_FINAL.pdf)

## Performance Measures

*Our Goal is to Deliver an Excellent Public Involvement Process Responsive to the Needs of the Community and Decision-makers<sup>9</sup>.*

### Provide Equitable Access to Transportation Decision-Making.

- 1.1 Meetings are held at convenient and accessible locations and times.
- 1.2 Visualization techniques are employed to describe plans.
- 1.3 Information is available online and in electronically accessible formats.
- 1.4 CPCMPO products are published to allow for a 30-45 day comment period.
- 1.5 Information, in languages other than English, is provided where needed.

### Continuously Engage the Public on Transportation Issues.

- 2.1 Community Characteristics Interactive Map is published and updated annually.
- 2.2 Calendar of prioritized community events is published quarterly .
- 2.3 Experiential techniques are used to engage the community on policy issues.
- 2.4 Citizens Advisory Committee actively engages the community on policy issues.

### Reach Communities Underserved by Transportation Planning.

- 3.1 CPMPO pursues initiatives that reach beyond the usual stakeholders and interest groups.
- 3.2 CPCMPO leverages relationships with organizations working with communities and users identified as underserved by transportation planning.
- 3.3 List of community-based organizations for targeted outreach and partnership is published quarterly.

### Evaluate and Improve Public Participation Efforts and Outcomes.

- 4.1 After Action Report is completed no later than 2 weeks after outreach activities.
- 4.2 After Action Reports include questions to measure implementation of public participation performance measures.
- 4.3 Public Involvement Evaluation Report is published annually to aid in evaluation.

<sup>9</sup> CPCMPO achieves desired outcomes by balancing the development of required planning products and the available resources of funds and staff time.



## PUBLIC PARTICIPATION TOOLS

### Calendar of Prioritized Community Events<sup>10</sup>

Month	Event	Policy Opportunity
January	MLK Celebration	Equity, Environmental Justice, Title VI
February	Black History Month Programs Arbor Day Programs Heart Health Month	Equity, Environmental Justice, Title VI Air Quality, Climate Change, Environment Land Use, Health, Equity, Aging
March	Safe Routes to School Literacy Alliance Programs	Safety, Equity, Land Use, Congestion Management Equity, limited English proficiency
April	Creative South Recycling Center Earth Day	Equity, Youth Air Quality, Climate Change, Environment, Land Use
May	Jane's Walk National Bike Month	Equity, Land Use Safety, Equity, Land Use, Congestion Management
June	Community Bike Ride	Equity, Congestion Management, Safety
July	Fort Benning Fourth of July	Equity, Military, Safety, Congestion
August	Back to School	Safety, Children, Land Use
September	Hispanic Heritage Festival CSU Health Conference	Equity, limited English proficiency Equity, Youth, Environmental Justice
October	Uptown Spooktacular Way Down Film Festival Community Bike Ride On the Table	Equity, Children Equity, Youth Equity, Environmental Justice, Title VI Land Use, Equity
November	National Planning Month Let's Grow STEAM	Land Use, Equity Equity, Children
December	Safe Kids Helmet Giveaway Mr. Jackson's Bike Giveaway	Safety, Equity, Environmental Justice, Title VI Equity, Environmental Justice, Title VI

**Invite MPO staff to attend your community event by emailing [cpcmpo@columbusga.org](mailto:cpcmpo@columbusga.org).**

<sup>10</sup> For specific recommendations, staff should reference and select, where appropriate, events recommended in the public comments section of this plan.

## Community Characteristics Interactive Map

Transportation Planning recognizes the adverse impacts of transportation projects of the past on communities who did not have a voice in previous decision-making processes. To engage the public, we first identify who we need to reach. We analyze the geographic distribution of various indicators to identify underserved communities in the CPCMPO area at the Census tract level. Staff combines indicators to understand which areas demonstrate an elevated presence of indicators. An overlay of transportation facilities and services assists the MPO in tailoring public involvement based on benefits and burdens. The map will be updated annually to coincide with the annual release of American Community Survey (ACS) datasets. The goal is to continue to develop the analysis into a robust community characteristics inventory. The following are the indicators we propose including in the initial analysis.

Population & Employment	Age <sup>11</sup>	Transportation Means	Minority	Ability
Population Households Density Where are the jobs Where workers live	Children 5-14 Youth 15-24 Seniors 75+	Commute by Walking, Bicycling, and Transit No vehicle in households	Non-Hispanic Minority Hispanic/Latino Origin Female Head of Household	Low income and poverty Persons with disabilities Limited English Speaking Renter occupied
US Census Sources: Decennial, ACS 5-year estimates (2012-2016), On The Map 2015				

## Additional Location-based Tools

### Center for Neighborhood Technology (CNT)

The Housing and Transportation (H+T) Affordability Index combines the costs of housing and transportation showing a more realistic measure of affordability. The data can be viewed from the Census block level to the Metro region.

### Response Outreach Area Mapper (ROAM)

This Census tool uses a low response score to identify hard-to-survey populations. The information is used to tailor communication, partner with community-based organizations, and adjust field practices. CPCMPO values using this resource for the similar purpose of public engagement.

<sup>11</sup> Research shows that these age groups have non-automobile travel demands often unmet in auto-centric decision-making.

## Experiential Techniques

An effective public involvement program continually brings the public along on transportation matters. CPCMPO helps the public learn about transportation policy issues by using a variety of techniques and strategies. Experiential or participatory learning is particularly effective<sup>12</sup>. CPCMPO will incorporate the following techniques into public participation efforts.

- Demonstration and Pop up projects
- Simulation
- Scenario testing
- Interactive maps
- High Quality Surveys
- Charrettes and visioning
- Walking audits and tours
- Bike Rides
- Transit experiences
- Voting and prioritizing activities
- Maker activities
- Conference calling, virtual meetings, and digital resources

*Tell me, and I forget.  
Teach me, and I remember.  
Involve Me, and I Learn.*

## Partnering with Community-Based Organizations

Community based organizations are formed by and for people in a community to advance their shared interests and local level concerns<sup>13</sup>. CPCMPO staff will attend regularly scheduled meetings to present relevant transportation information and gather input. Staff will work with CPCMPO Committee members to publish a quarterly schedule of community-based organization opportunities for targeted outreach<sup>14</sup>.

<sup>12</sup> Incorporating Qualitative Data in the Planning Process: Improving Project Delivery and Outcomes. Federal Highway Administration, March 2017.

[https://www.fhwa.dot.gov/environment/bicycle\\_pedestrian/publications/qualitative\\_data/fhwahep17075.pdf](https://www.fhwa.dot.gov/environment/bicycle_pedestrian/publications/qualitative_data/fhwahep17075.pdf)

<sup>13</sup> FHWA describes how MPOs can improve planning capacity by partnering with Community-Based Organizations.

[https://www.planning.dot.gov/publicinvolvement/pi\\_documents/1b-a.asp](https://www.planning.dot.gov/publicinvolvement/pi_documents/1b-a.asp)

<sup>14</sup> For specific recommendations, staff should reference and select, where appropriate, organizations recommended in the public comments section of this plan.

## HOW ARE WE DOING?

### After Action Report

In order to evaluate the outcomes of public participation efforts by CPCMPO, staff records activities using an After Action Report (AAR). We use a Google Form; an efficient and collaborative tool for collecting and analyzing responses. Questions on the AAR measure public participation performance objectives<sup>15</sup>. Click [here](#) to view the AAR.

QUESTION #	RESPONSE REQUESTED	OBJECTIVES MEASURED
1	Email address of responder	1.1, 4.2
2	Date	1.1, 4.2
3	Start Time	1.1, 4.2
4	End Time	1.1, 4.2
5	Location	1.1, 4.2
6	Staff or Committee members who worked the event/activity?	1.5, 2.4, 4.2
7	How did MPO notify participants?	1.3, 1.4
8	If applicable, list publication dates of public notices for this meeting/event.	1.3, 1.4
9	What was the format of the event/activity?	1.2, 2.3
10	Was format determined by MPO?	1.2, 2.3
11	Is this event on the MPO calendar of prioritized community events?	2.2
12	Which visualization techniques were used?	1.2
13	Which experiential techniques were used?	2.3
14	Which policy and planning issues were addressed?	2.3, 2.4
15	Number of attendees or participants reached?	3.1, 3.2, 4.2
16	Characteristics of the people reached.	1.3, 4.2
17	Which partners were involved?	2.4, 3.1, 3.2, 4.2
18	List Community-Based Organizations you partnered with.	3.1, 3.2, 3.3
19(1)	Was the location ADA accessible?	1.1
19(2)	Was the location conveniently located for your audience?	1.1
19(3)	Was the location reachable by transit and paratransit?	1.1, 4.2
19(4)	Did you collect contact information?	1.3, 4.3
19(5)	Did you provide a 30-45 day comment period?	1.3, 1.4

<sup>15</sup> Performance based planning involves not only the collection of data, but also the reporting and evaluating of the data in order to understand how well approaches are working and inform future decision making. [https://www.fhwa.dot.gov/planning/performance\\_based\\_planning/pbpp\\_guidebook/page09.cfm](https://www.fhwa.dot.gov/planning/performance_based_planning/pbpp_guidebook/page09.cfm)

## Public Involvement Evaluation Report (PIER)

To report results and progress of public outreach, the CPCMPO analyzes the public outreach activities of the previous year and packages them into a Public Involvement Evaluation Report (PIER). The format of PIER will be an infographic, short newsletter, or similar communication tool presenting the information in a clear and concise manner. Contents of PIER include:

- ✓ Summary of efforts and outcomes in comparison to performance objectives using data collected from the After Action Report responses. The Google Form automatically populates a spreadsheet.
- ✓ Summary of social media and website statistics.
- ✓ Analysis of cost effectiveness of strategies used.
- ✓ Engaging format such as an infographic, newsletter, and other reader-friendly layouts.
- ✓ Easy to understand graphics and data visualizations.
- ✓ Story or highlights of specific examples of engaging the public—good ones as well as lessons learned.
- ✓ Clear, easy to understand language.
- ✓ Published annually.

## LEARN MORE

### Online and Social Media

Columbus Plans and MPO Website. <https://www.columbusga.gov/Planning/Trans.htm>

Columbus Plans and MPO Facebook. <https://www.facebook.com/columbus.plans/>

Georgia Department of Transportation Social Media Hub. <http://www.dot.ga.gov/PS/Public/SocialHub>

Alabama Department of Transportation. <https://www.dot.state.al.us/>

Phenix City. <https://phenixcityal.us/>

### Publications

*Briefing Book: The Transportation Planning Process: Key Issues.* US Department of Transportation, 2017.

[https://www.planning.dot.gov/documents/briefingbook/bbook\\_07.pdf](https://www.planning.dot.gov/documents/briefingbook/bbook_07.pdf)

*Public Involvement Plan.* Georgia Department of Transportation, 2016.

<http://www.dot.ga.gov/PartnerSmart/DesignManuals/Environmental/Public%20Involvement%20Plan/PublicInvolvementPlan.pdf>

*Every Place Counts Leadership Academy: Transportation Toolkit.* US Department of Transportation.

<https://www.transportation.gov/leadershipacademy>

## DEVELOPMENT OF THIS PLAN

### Interested Parties

MPO Staff developed a draft of this Public Participation Plan in consultation with interested parties outlined in the Code of Federal Regulations and those recommended by the MPO committees. Those parties include:

- ✓ Individuals
- ✓ Affected public agencies
- ✓ Representatives of public transportation employees
- ✓ Representatives of users of public transportation
- ✓ Representatives of users of pedestrian walkways and bicycle transportation facilities
- ✓ Representatives of the disabled
- ✓ CPCMPO Committee Members

### Public Review Process

MPO staff provided a 45-day public comment period from June 19-August 3, 2018. The Draft Public Participation Plan was available via the following:

- Columbus Plans website
- Columbus Plans facebook
- Email to CPCMPO Committee Members
- Email to Columbus Planning Department Email List (Contact Contact)
- Link to a Google Form to provide feedback
- Availability of email address for comments at [cpcmpo@columbusga.org](mailto:cpcmpo@columbusga.org)

## Public Comments

The following table contains the comments submitted via the electronic Google Form. MPO Staff designed the form to request general comments as well as recommendations for events, organizations, and social media that the MPO should pursue for outreach efforts. We appreciate receiving the following 4 comments.

1. Comments from Linda Wallman received 6/25/2018

**General Comments:** "I am not sure if this is the appropriate forum, but I would like to add my support to efforts to bring I-14 through Columbus and Middle Georgia".

**Events:** "Forum to discuss I-14".

**Organizations:** "Entire community".

**Social Media:** none

2. Comments from Lisa Keller received 6/25/2018

**General Comments:** "Frequent, affordable, safe, well-marked and GPS-trackable local transportation is KEY for those in Columbus without access to a car. Or, for those actively electing to use local transport. I believe that by knowing where the bus is at all times and how long the wait will be, users will be more likely to use the system. Families need SAFE, well-marked, well-spaced roads to bike, walk and run. By marking roads as one-way and providing wide berth, we encourage our citizens to walk/run/cycle/shop, cultivate an interest in active living and prove that Columbus is, in fact, designed for all ages, needs and interests.".

**Events:** "Midtown Arts in the Park; Columbus Orchestra events (interest?)".

**Organizations:** "Midtown, Inc; Bicycle Columbus; Boys and Girls Club of Columbus; MercyMed; Muscogee County Bookmobile; Saturday morning Farmer's Market; Columbus Vet Clinic (US armed forces) Center; Columbus Museum".

**Social Media:** none

3. Comments from John M. House received 6/26/2018

**General Comments:** "I applaud the idea of including the public in future transportation planning. I look forward to being informed of engagement opportunities. I hope the discussion includes connectivity outside the region.".

**Events:** "The outreach visits by the city staff to neighborhoods. Town halls conducted by the mayor and city councilors. Offer speakers to local organizations and schedule those speaking events. Festivals held locally in the city parks. Market Days occasionally - when you set up an information table.".

**Organizations:** "Veterans Action Committee of Columbus American Legion (Posts 333, 267, and 35 in Columbus; 135 in Phenix City) Veterans of Foreign Wars Disabled American Veterans Military Officers Association of America Military Order of the World Wars Kiwanis (all clubs) Rotary Exchange Club Lions Club National Infantry Foundation National Infantry Association National Armor and Cavalry Heritage Foundation".

**Social Media:** none

4. Comments from Myrtle Cambridge received 6/27/2018

**General Comments:** "I am not well informed about this entity and cannot appropriately comment due to lack of knowledge.".

**Events:** none

**Organizations:** none

**Social Media:** none



## Committee Comments

MPO staff requested comments from CPCMPO Committee Members. We appreciate receiving the following comment.

1. Comments from Olivia Lewis, Federal Highway Administration Georgia Division via email.

From: Lewis, Olivia D. (FHWA) <Olivia.Lewis@dot.gov>

Sent: Wednesday, June 20, 2018 3:15 PM

To: Carolina Rodriguez <Rodriguez.Carolina@columbusga.org>

Cc: Lynda Temples <LTemples@columbusga.org>; Edwards, Andrew (FHWA)

<andrew.edwards@dot.gov>; Giles, Vontra (FHWA) <vontra.giles@dot.gov>

Subject: Draft CPCMPO PPP

Hello Carolina,

The draft PPP is short but covers some main points. I do have a few minor things for you to consider for thought.

\*Ensure the MPO map is large enough to clearly see the MPO area/boundaries and/or state the areas within that section (page 6.)

\*State the review time period for the applicable documents you listed under planning activities (page 8).

\*It would be informative to state some of the initiatives referenced under Reach Communities Underserved by... that would be pursued (13).

\*Since there is no glossary, it can be helpful to the public to have all acronyms spelled out.

Thank you

Olivia Lewis

FHWA

No additional comments were received by the document preparer.

No comments were received via the [cpcmpo@columbusga.org](mailto:cpcmpo@columbusga.org).

Prepared by the Columbus-Phenix City Metropolitan Planning Organization

### MPO Staff

Rick Jones, Director  
Millicent Burden, Administration  
David Cooper, GIS Technician  
Felton Grant, Right-of-Way Coordinator  
Lynda Temples, Principal Transportation Planner  
Carolina Rodriguez, Transportation Planner

### Contact Us

Email: [cpcmpo@columbusga.org](mailto:cpcmpo@columbusga.org)

[www.columbusga.gov/planning](http://www.columbusga.gov/planning)

706-225-3938

420 10<sup>th</sup> Street, 2<sup>nd</sup> floor

PO Box 1340

Columbus, GA 31902