

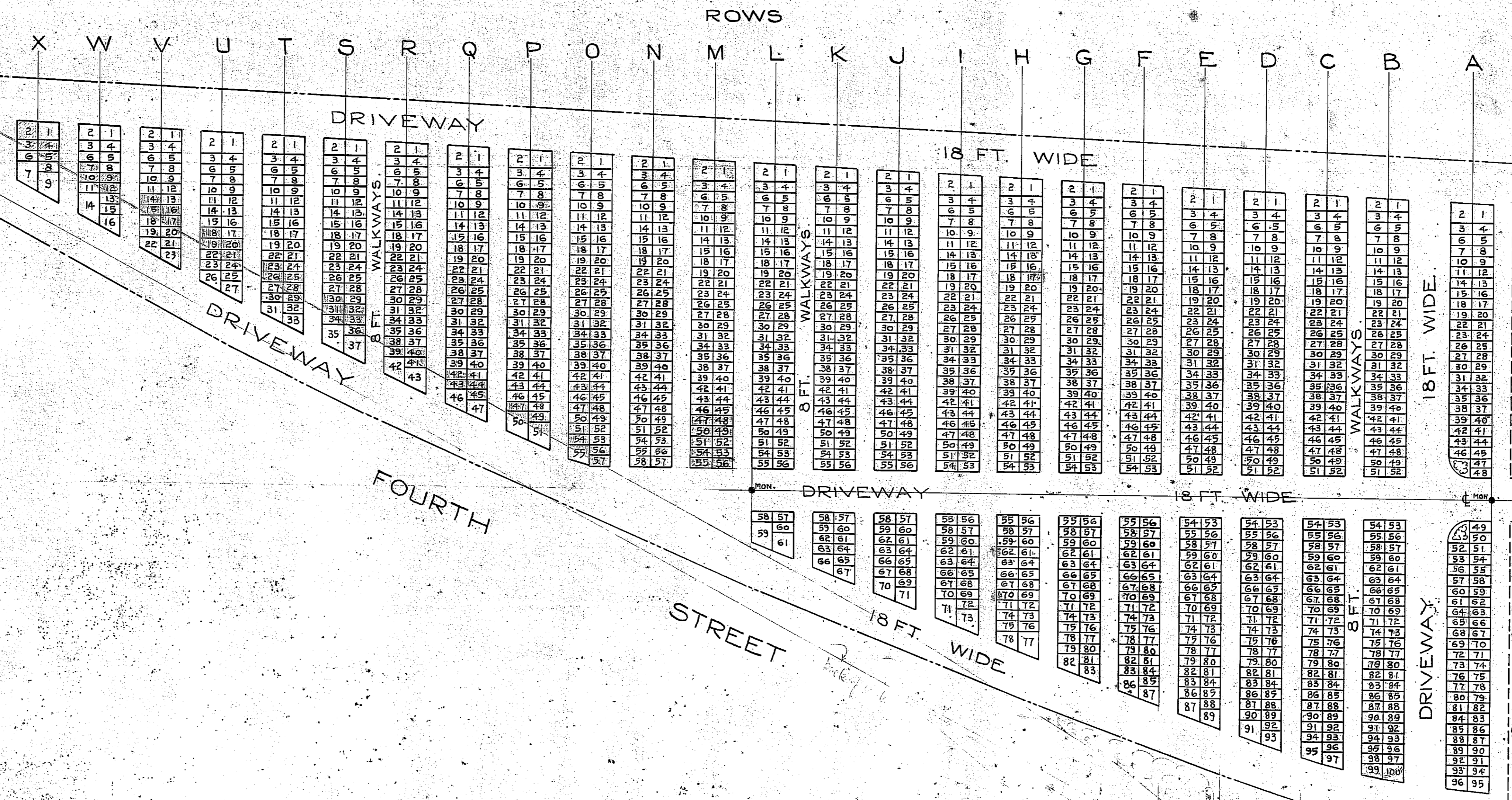


SIZE AND PRICE  
OF  
IRREGULAR LOTS.

ROW	LOT NO.	LENGTH OF SIDES	AREA SQ. FT.	PRICE
		E. W. N. S.		
A	1	7.97 8.6 3.0 3.0	74.25	18.33
A	2	8.6 8.1 3.0 3.0	66.60	16.22
A	3	8.1 7.1 3.0 3.0	59.85	14.78
B	1	8.4 8.4 3.0 3.0	50.40	12.44
B	2	8.4 7.4 3.0 3.0	51.75	12.78
B	3	8.4 6.4 3.0 3.0	47.10	11.67
C	1	6.6 6.6 3.0 3.0	41.10	10.11
C	2	6.6 5.6 3.0 3.0	36.30	9.00
C	3	6.6 4.6 3.0 3.0	31.50	7.87
D	1	7.3 7.3 3.0 3.0	53.10	13.11
D	2	7.3 6.3 3.0 3.0	46.35	11.50
D	3	7.3 5.3 3.0 3.0	39.60	9.80
E	1	10.6 10.6 3.0 3.0	112.20	27.90
E	2	10.6 9.6 3.0 3.0	101.40	25.20
E	3	10.6 8.6 3.0 3.0	90.60	22.50
F	1	10.6 10.6 3.0 3.0	112.20	27.90
F	2	10.6 9.6 3.0 3.0	101.40	25.20
F	3	10.6 8.6 3.0 3.0	90.60	22.50
G	1	8.3 8.3 3.0 3.0	68.85	17.11
G	2	8.3 7.3 3.0 3.0	60.10	15.00
G	3	8.3 6.3 3.0 3.0	51.35	12.80
H	1	7.7 7.7 3.0 3.0	59.10	14.60
H	2	7.7 6.7 3.0 3.0	50.35	12.40
H	3	7.7 5.7 3.0 3.0	41.60	10.20
I	1	11.0 11.0 3.0 3.0	121.00	29.90
I	2	11.0 10.0 3.0 3.0	110.25	27.30
I	3	11.0 9.0 3.0 3.0	99.50	24.70
J	1	10.7 10.7 3.0 3.0	114.45	28.40
J	2	10.7 9.7 3.0 3.0	103.70	25.80
J	3	10.7 8.7 3.0 3.0	92.95	23.20
K	1	6.6 6.6 3.0 3.0	43.20	10.60
K	2	6.6 5.6 3.0 3.0	38.40	9.40
K	3	6.6 4.6 3.0 3.0	33.60	8.20
L	1	7.3 7.3 3.0 3.0	53.10	13.11
L	2	7.3 6.3 3.0 3.0	46.35	11.50
L	3	7.3 5.3 3.0 3.0	39.60	9.80
M	1	11.3 11.3 3.0 3.0	127.41	31.60
M	2	11.3 10.3 3.0 3.0	116.66	28.90
M	3	11.3 9.3 3.0 3.0	105.91	26.20
N	1	11.3 11.3 3.0 3.0	127.41	31.60
N	2	11.3 10.3 3.0 3.0	116.66	28.90
N	3	11.3 9.3 3.0 3.0	105.91	26.20
O	1	11.3 11.3 3.0 3.0	127.41	31.60
O	2	11.3 10.3 3.0 3.0	116.66	28.90
O	3	11.3 9.3 3.0 3.0	105.91	26.20
P	1	11.3 11.3 3.0 3.0	127.41	31.60
P	2	11.3 10.3 3.0 3.0	116.66	28.90
P	3	11.3 9.3 3.0 3.0	105.91	26.20
Q	1	11.3 11.3 3.0 3.0	127.41	31.60
Q	2	11.3 10.3 3.0 3.0	116.66	28.90
Q	3	11.3 9.3 3.0 3.0	105.91	26.20
R	1	11.3 11.3 3.0 3.0	127.41	31.60
R	2	11.3 10.3 3.0 3.0	116.66	28.90
R	3	11.3 9.3 3.0 3.0	105.91	26.20
S	1	11.3 11.3 3.0 3.0	127.41	31.60
S	2	11.3 10.3 3.0 3.0	116.66	28.90
S	3	11.3 9.3 3.0 3.0	105.91	26.20
T	1	11.3 11.3 3.0 3.0	127.41	31.60
T	2	11.3 10.3 3.0 3.0	116.66	28.90
T	3	11.3 9.3 3.0 3.0	105.91	26.20
U	1	11.3 11.3 3.0 3.0	127.41	31.60
U	2	11.3 10.3 3.0 3.0	116.66	28.90
U	3	11.3 9.3 3.0 3.0	105.91	26.20
V	1	11.3 11.3 3.0 3.0	127.41	31.60
V	2	11.3 10.3 3.0 3.0	116.66	28.90
V	3	11.3 9.3 3.0 3.0	105.91	26.20
W	1	11.3 11.3 3.0 3.0	127.41	31.60
W	2	11.3 10.3 3.0 3.0	116.66	28.90
W	3	11.3 9.3 3.0 3.0	105.91	26.20
X	1	11.3 11.3 3.0 3.0	127.41	31.60
X	2	11.3 10.3 3.0 3.0	116.66	28.90
X	3	11.3 9.3 3.0 3.0	105.91	26.20

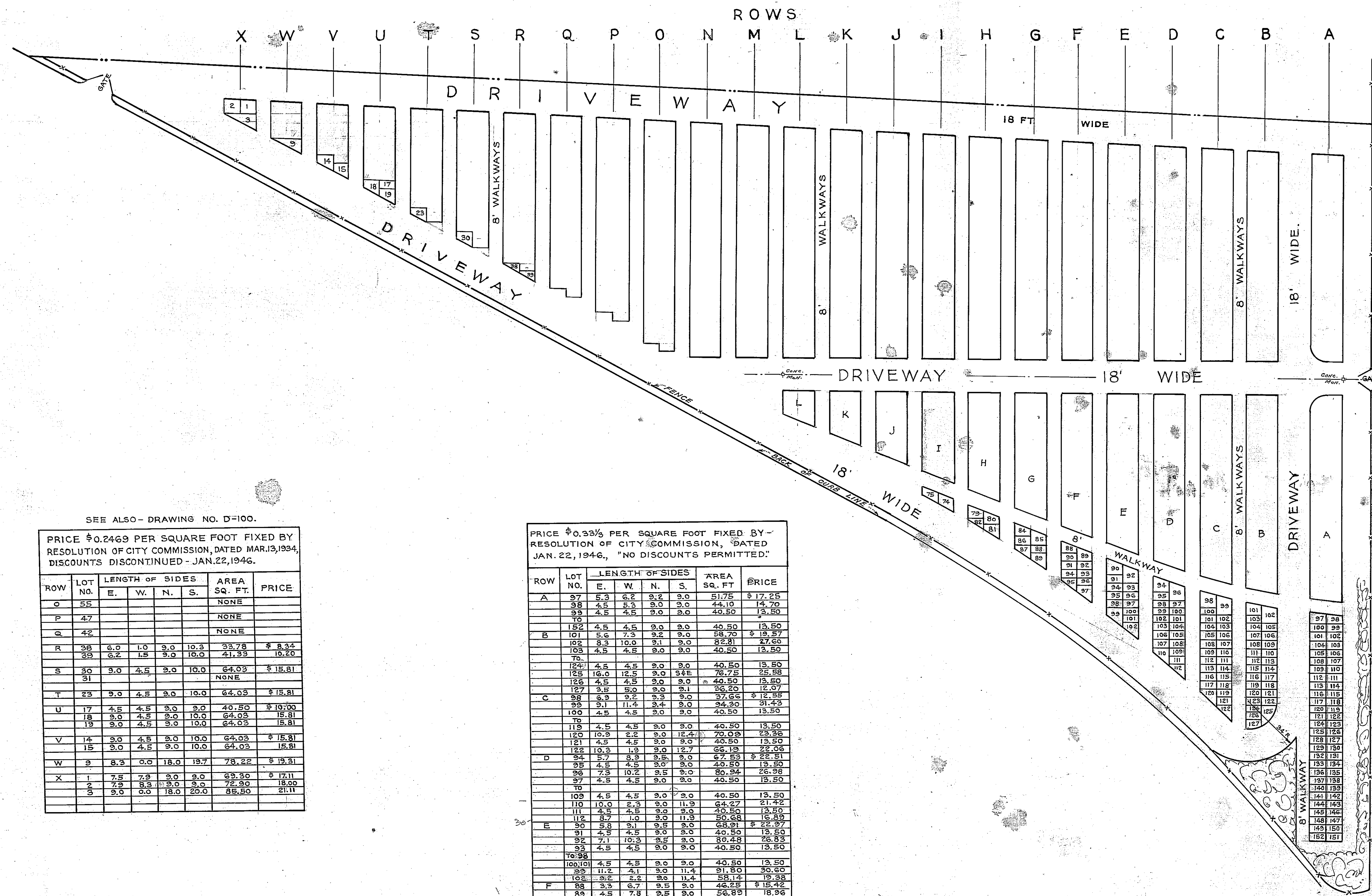
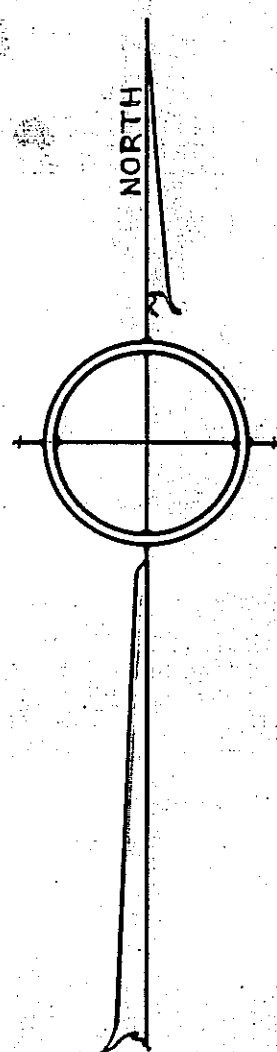
NOTE:  
PRICE OF 4'6" BY 9'0"  
STANDARD GRAVE SPACE  
FIXED BY CITY COMMISSION  
MARCH 13 1934 AT \$10.00  
DISCOUNT 25% ON FOUR LOTS.

PRICE - \$0.2469 PER SQ. FT.



DRAWING N° D-100.

**PORTERDALE**  
A CEMETERY  
FOR  
COLORED PEOPLE.  
CITY OF COLUMBUS, GA.  
OFFICE OF CITY ENGINEER.  
SCALE - 1" = 30'  
APRIL - 12 - 1934.



SEE ALSO - DRAWING NO. D-100.

PRICE \$0.2469 PER SQUARE FOOT FIXED BY RESOLUTION OF CITY COMMISSION, DATED MAR. 13, 1934, DISCOUNTS DISCONTINUED - JAN. 22, 1946.

ROW	LOT NO.	LENGTH OF SIDES				AREA SQ. FT.	PRICE
		E.	W.	N.	S.		
O	55					NONE	
P	47					NONE	
Q	42					NONE	
R	38	6.0	1.0	9.0	10.3	33.78	\$ 8.24
	39	6.2	1.5	9.0	10.0	41.33	10.20
S	30	3.0	4.5	9.0	10.0	64.03	\$ 15.81
	31					NONE	
T	23	9.0	4.5	9.0	10.0	64.03	\$ 15.81
U	17	4.5	4.5	9.0	9.0	40.50	\$ 10.00
	18	9.0	4.5	9.0	10.0	64.03	15.81
	19	9.0	4.5	9.0	10.0	64.03	15.81
V	14	9.0	4.5	9.0	10.0	64.03	\$ 15.81
	15	9.0	4.5	9.0	10.0	64.03	15.81
W	9	8.3	0.0	18.0	19.7	78.22	\$ 19.31
X	1	7.5	7.9	9.0	9.0	69.30	\$ 17.11
	2	7.3	8.3	9.0	9.0	72.90	18.00
	3	9.0	0.0	18.0	20.0	85.50	21.11

PRICE \$0.33 PER SQUARE FOOT FIXED BY RESOLUTION OF CITY COMMISSION, DATED JAN. 22, 1946., "NO DISCOUNTS PERMITTED"

ROW	LOT NO.	LENGTH OF SIDES				AREA SQ. FT.	PRICE
		E.	W.	N.	S.		
A	97	5.3	6.2	9.0	9.0	51.75	\$ 17.25
	98	4.5	5.3	9.0	9.0	44.10	14.70
	99	4.5	4.5	9.0	9.0	40.50	13.50
B	102	4.5	4.5	9.0	9.0	40.50	13.50
	101	5.2	7.3	9.0	9.0	58.70	\$ 19.57
	103	8.3	10.0	9.1	9.0	82.81	27.60
	104	4.5	4.5	9.0	9.0	40.50	13.50
C	126	4.5	4.5	9.0	9.0	40.50	13.50
	125	16.0	12.5	9.0	9.0	76.75	25.58
	127	3.5	5.0	9.0	9.0	26.20	8.67
	128	4.5	4.5	9.0	9.0	40.50	13.50
D	94	5.7	3.3	9.5	9.0	67.53	\$ 22.51
	95	4.5	4.5	9.0	9.0	40.50	13.50
	96	7.3	10.2	9.5	9.0	80.94	26.98
	97	4.5	4.5	9.0	9.0	40.50	13.50
E	109	4.5	4.5	9.0	9.0	40.50	13.50
	110	10.9	2.2	9.0	12.4	70.09	23.36
	111	4.5	4.5	9.0	9.0	40.50	13.50
	112	5.7	3.3	9.5	9.0	67.53	22.51
F	88	3.3	6.7	9.5	9.0	46.25	\$ 15.42
	89	4.5	7.8	9.5	9.0	56.89	18.96
	90	4.5	4.5	9.0	9.0	40.50	13.50
G	84	4.0	7.3	9.0	9.0	52.55	\$ 17.52
	85	5.2	8.5	9.0	9.0	52.55	17.52
	86	4.5	4.5	9.0	9.0	40.50	13.50
	87	3.5	2.7	9.0	10.7	55.10	18.33
	88	4.5	4.5	9.0	9.0	40.50	13.50
	89	9.9	4.0	9.0	10.7	68.46	22.82
H	79	4.5	7.9	9.55	9.0	57.51	\$ 19.17
	80	4.5	7.9	9.55	9.0	57.51	19.17
	81	8.5	3.1	9.0	10.5	56.55	18.85
	82	6.4	0.9	9.0	10.5	35.59	11.86
I	74	7.2	5.5	9.65	10.35	63.50	\$ 21.17
	75	3.5	4.0	9.65	10.35	47.50	15.83

TOTAL OF 161 LOTS.

DRAWING NO. D-124.  
**SUPPLEMENT TO PORTERDALE**  
 COLORED CEMETERY  
 CITY OF COLUMBUS, GA.  
 OFFICE OF CITY ENGINEER  
 SCALE 1" = 30' MAY 21, 1946.

D-155

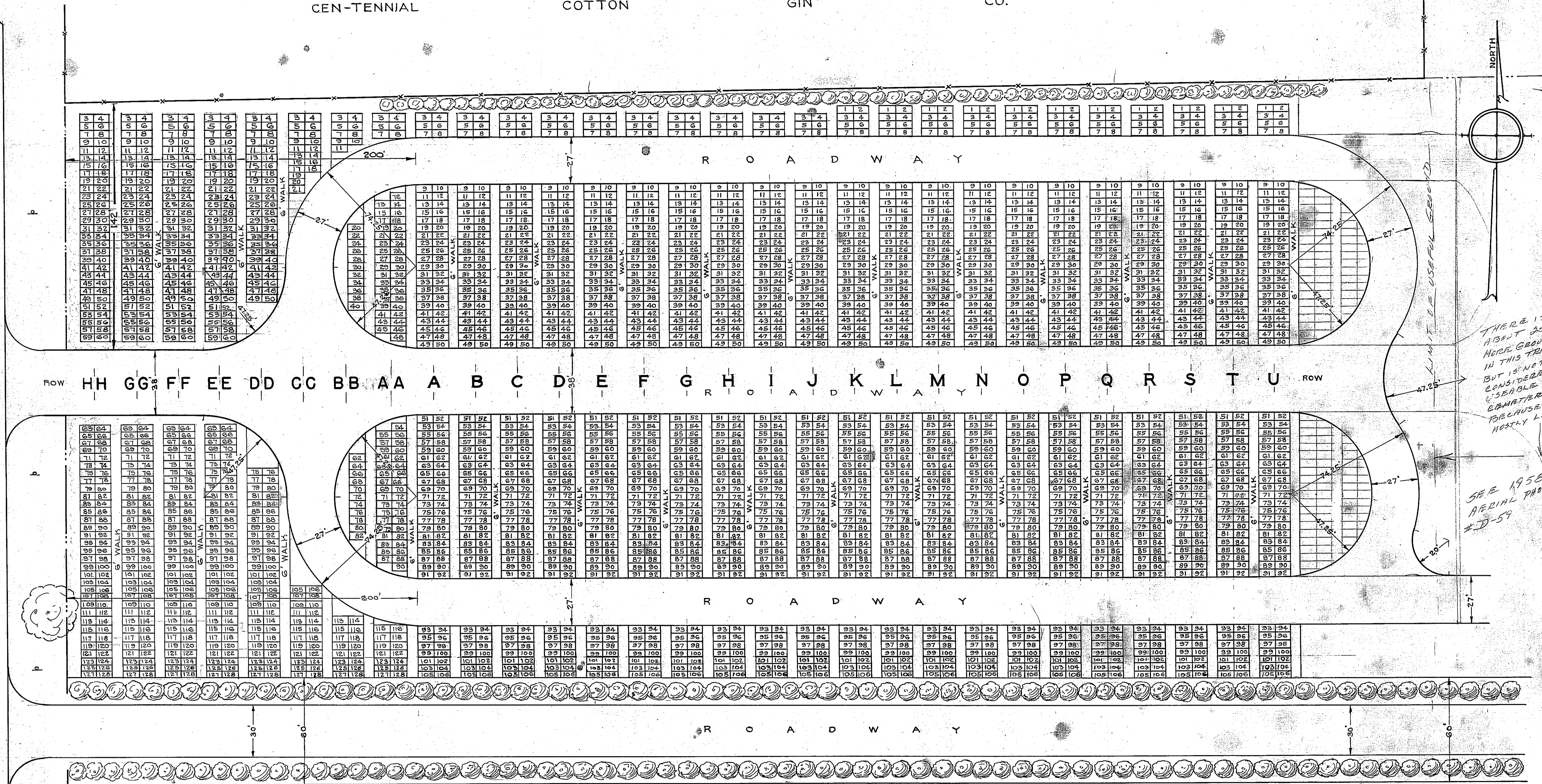
343-25, 343-34

C E M E T E R Y G A T E P O P U L A R T E R R A L L E

AVENUE 10TH

CEN-TENNIAL COTTON GIN CO.

CEN-TENNIAL COTTON GIN CO.



THERE IS ABOUT 250 NICE GRASS NEAR GROUND IN THIS TRACT BUT IS NOT CONSIDERED SEPARABLE FOR EMBARRASSMENT BECAUSE IT IS MOSTLY LAID FILL (1948)

SEE 1958 AERIAL PHOTO #D-59

RESOLUTION NO. 144-63 ADOPTED BY CITY COMMISSION 4 AUGUST 1963 PRICE OF \$2.00 PER SQUARE FOOT ALL RESOLUTIONS HERETO ADOPTED IN CONFLICT HERewith ARE HEREBY REPEALED

INDIVIDUAL LOT 4.5 FT. X 9.0 FT. = 40.5 SQUARE FEET. = \$81.00

BY RESOLUTION OF CITY COMMISSION, 22-MAY-1961 PRICE OF \$30.00 PER LOT IN

- LOTS 63 THRU 122, INCL. OF ROW H-H, G-G, F-F AND E-E;
- LOTS 75 THRU 122, INCL. OF ROW D-D;
- LOTS 105 THRU 122, INCL. OF ROW C-C;
- LOTS 113 THRU 122, INCL. OF ROW B-B; AND
- LOTS 115 THRU 122, INCL. OF ROW A-A.

FOR PERSONAL USE AND NOT FOR RESALE.

BY RESOLUTION OF CITY COMMISSION 3 MAY 1965 PRICE OF \$40.50 PER LOT

- LOTS 1 THRU 60 OF ROW H-H G-G F-F E-E
- LOTS 1 THRU 50 ROW D-D
- LOTS 1 THRU 21 ROW C-C
- LOTS 1 THRU 82 ROW B-B
- LOTS 1 THRU 90 ROW A-A AND
- LOTS 123 THRU 128 OF ROW A-A THRU H-H AND
- LOTS 101 THRU 106 OF ROW A THRU U

A TOTAL OF 2986 INDIVIDUAL LOTS; EACH 4.5 FT. X 9.0 FT.

PRICE OF \$0.50 PER SQUARE FOOT OR \$20.25 PER 4.5 FT. X 9.0 FT. INDIVIDUAL LOT AS FIXED BY RESOLUTION ADOPTED BY CITY COMMISSION, DATED JAN. 21, 1947.

"DISCOUNTS DISCONTINUED AS OF JAN. 22, 1946."

DRAWING NO. D-125  
**EAST PORTERDALE CEMETERY**  
 CITY OF COLUMBUS, GEORGIA  
 OFFICE OF CITY ENGINEER

ADDED ROWS AA THRU HH ON NORTH SIDE	SCALE 1" = 30'
ADDED LOTS 123-128 101-106 4-29-65	DATE DEC. 27, 1946
ADDED LOTS 129-130 107-108 109-110	DRAWN TRACED CHECKED
ADDED LOTS 131-132 109-110 111-112	GRIMES.

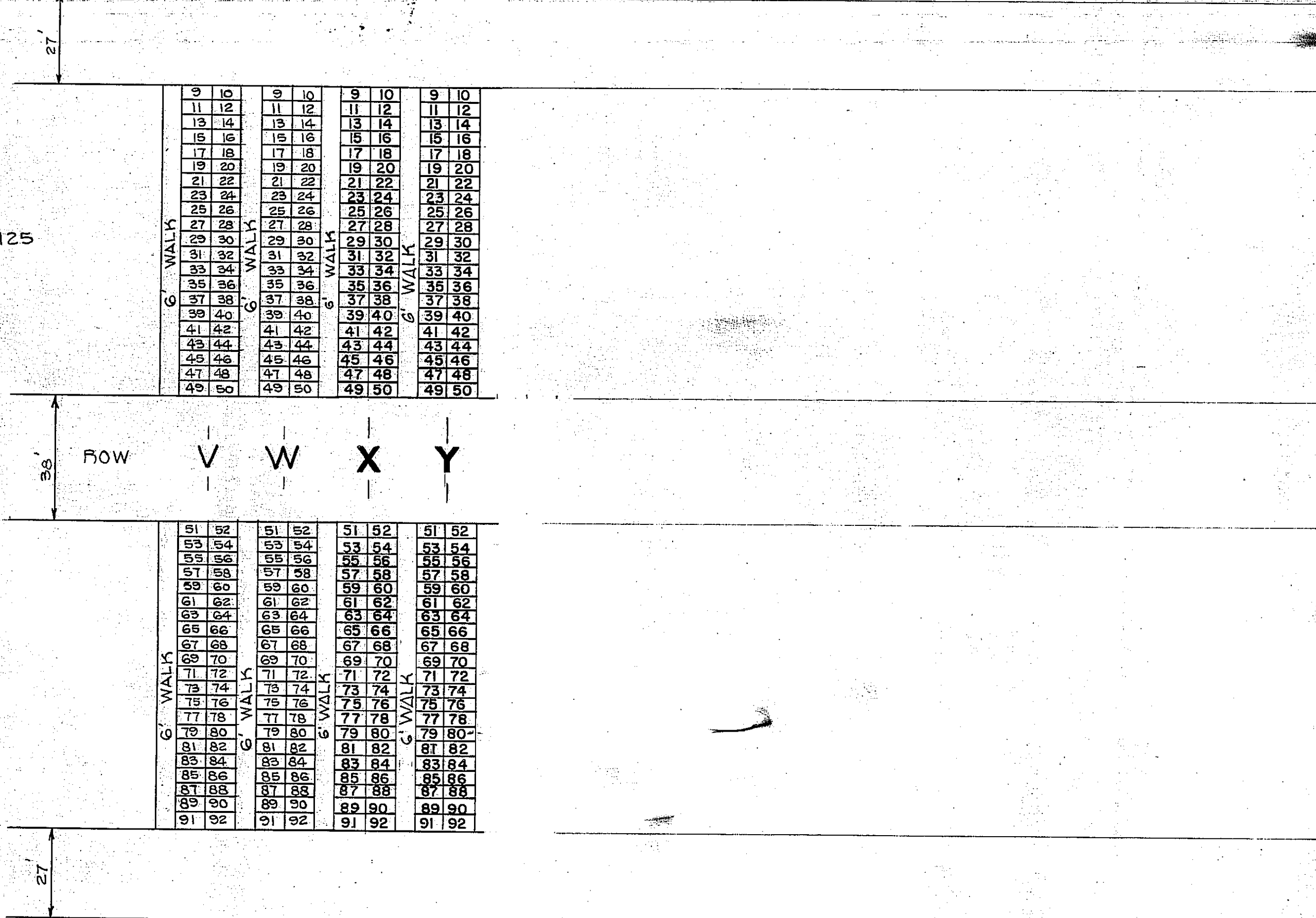
72A

1	2
3	4
5	6
7	8

1	2
3	4
5	6
7	8

1	2
3	4
5	6
7	8

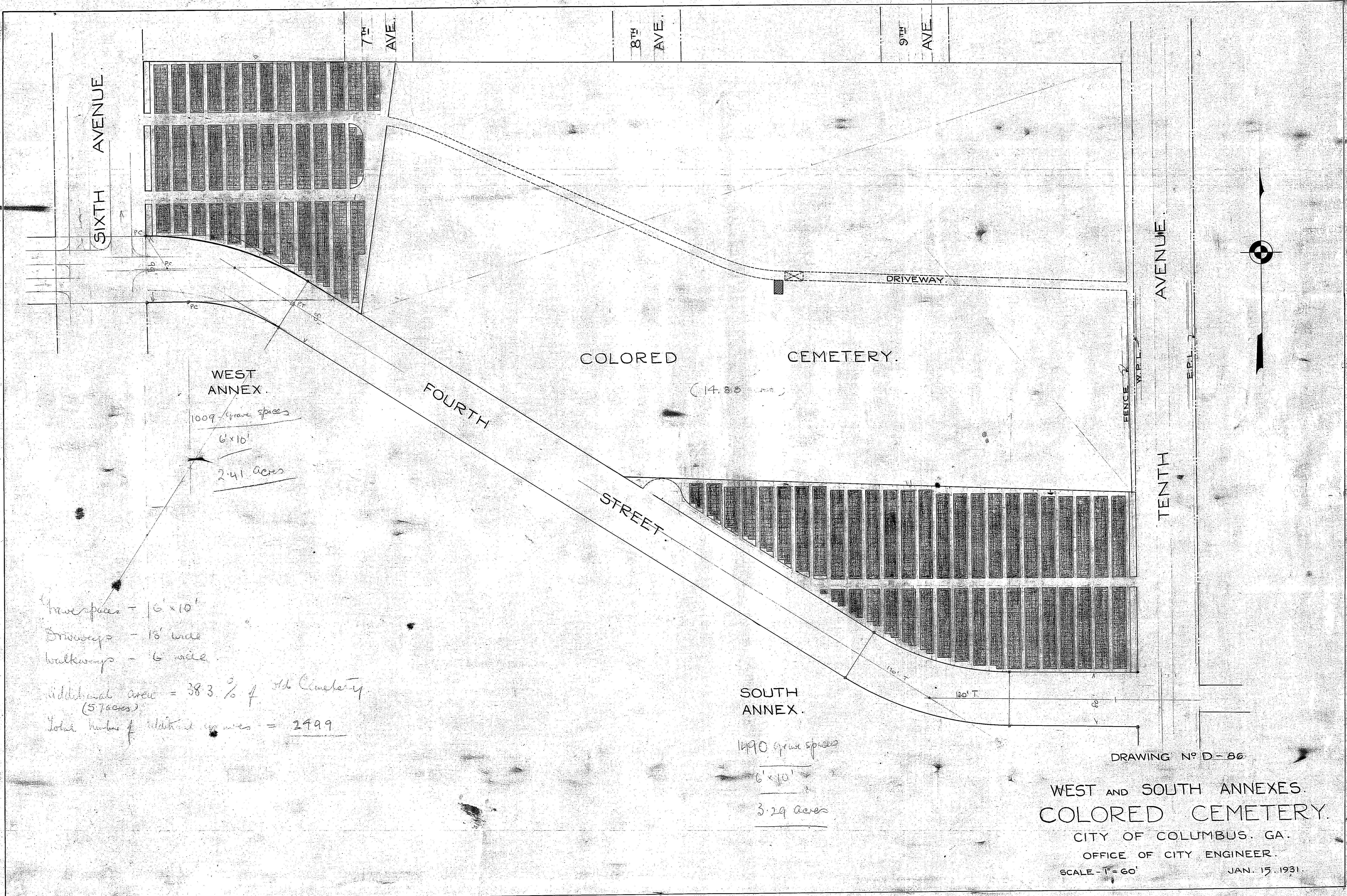
1	2
3	4
5	6
7	8



RESOLUTION NO. 144-69 ADOPTED BY CITY COMMISSION 4 AUGUST 1969  
 PRICE OF \$ 2.00 PER SQUARE FOOT  
 INDIVIDUAL LOT 4.5 FT. x 9.0 FT. = 40.5 SQ.FT. = \$ 81.00

DRAWING NO. D-125 A	
EAST PORTERDALE CEMETERY	
DEPARTMENT OF ENGINEERING COLUMBUS, GEORGIA	
REVISIONS	SCALE 1"=30'
	25 MARCH 1971

D-152A



WEST ANNEX.

1009 grave spaces  
6'x10'  
2.41 acres

COLORED CEMETERY.  
(14.88 acres)

SOUTH ANNEX.

1490 grave spaces  
6'x10'  
3.29 acres

Gravespace - 6'x10'  
Driveways - 18' wide  
Walkways - 6' wide

Additional area = 38.3% of Hd. Cemetery  
(57 acres)  
Total number of additional graves = 2499

DRAWING NO D-86

WEST AND SOUTH ANNEXES.  
COLORED CEMETERY.

CITY OF COLUMBUS, GA.

OFFICE OF CITY ENGINEER.

SCALE - 1" = 60'

JAN. 15, 1931.